

**AAATE General Assembly Bologna, Italy, co-located with AAATE Conference 2019,
29.08.2019, 17:00 h**

Elections Package

By the AAATE Nomination Committee:
Mojca Debeljak, Christian Bühler, Gyori Miklos

Positions for election for the term 2020 – 2021, currently held by:

President:	Luc de Witte (NL)
President Elect:	Katerina Mavrou (CY)
Past President:	Peter Cudd (UK)
Treasurer:	Helena Hemmingsson (SE)
Secretary:	Anne Kanto-Ronkanen (FI)
Project Officer:	Dominique Archambault (FR)
External Communication and Information:	Ramon Daniels (NL)

Candidates proposed by the board in office (following the election by-law enforced in 2014):

President:	Katerina Mavrou (CY)
President Elect:	Georgios Kouroupetroglou (GR)
Past President:	Luc de Witte (NL)

Candidates for four board positions (allocation of final role in the board will be agreed on by the new board)

Dominique Archambault (FR) (re-candidate)
Pedro Encarnação (P) (new candidate)
Ramon Daniels (NL) (re-candidate)
Anne Kanto-Ronkanen (FI) (re-candidate)
Silvio Marcello Pagliara (I) (new candidate)

Two positions as auditors for the term 2020 – 2021, currently held by:

Jan Engelen (BE)
Tamas Laki (HU) – dropped out in 2018

Candidates for the two auditors

Jan Engelen (BE)
?? (Direct contacts to members/candidates in Bologna)

Three positions in the Nomination Committee for the term 2020 – 2021, currently held by:

Mojca Debeljak (SI)
Christian Bühler (DE)
Gyori Miklos (HU)

Candidates for the three positions in the Nomination Committee

Klaus Miesenberger (AT)
Christian Bühler (DE)
?? (Direct contacts to members/candidates in Bologna)

Nomination for Past President

Luc P. de Witte

Date of birth: June 28, 1959
 Nationality: Dutch
 Marital status: Married, 6 children
 Current positions: Professor of Technology in Care at Zuyd University of Applied Sciences
 Professor of Technology in Care at Maastricht University
 Director of the Centre of Expertise on innovative Care and Technology, a public private partnership of about 35 partner organisations



Overview of career: I was born in the summer of 1959, in a small village in the South of the Netherlands. After a relatively quiet and protected youth I studies medicine in Maastricht as one of the first students of that university. After my medical studies I have been working on practice and policy oriented research and innovation in care, in different roles and in different organisations. My research started in the institute

for rehabilitation research (iRv) in Hoensbroek, the Netherlands, initially focusing on rehabilitation but later also on people with developmental disabilities, people with a chronic disease and elderly. Within iRv I have always had management roles, about 15 years as a member of the management team. In 2002 I became the first professor at Zuyd University of Applied Sciences, next to my roles within iRv. Since 2008 I am also a professor at Maastricht University with the same research topic. My research team consists of about 35 people, with 28 at Zuyd and 7 in Maastricht. The past five years I focus on my work in both universities. I have supervised a large number of national and international research and development projects, most of which related to assistive technology and care technology. I have successfully supervised about 20 PhD students and today I have 15 PhD students.

My research focuses on 3 main themes: 1) supporting self management of people with chronic condition with telecare of eHealth applications; 2) technology of human functioning (assistive technology, care robotics); 3) community oriented care and support. In all themes the application of technology is the focus point. All projects are done in collaboration with care organisations, technical partners and end users. In 2012 I took the initiative to set up a regional innovation network, involving care organisations, private companies, knowledge institutes, local governments and other stakeholders, aiming at accelerating innovations in long term care. The central theme in this network is the challenge to support people with disabilities from whatever background to live independently as long as possible and to lead an active socially integrated life. Technology can play a very strong role in realising this. This network has developed into the centre of expertise on innovative care and technology, which is recognised by the Dutch government and received substantial funding.

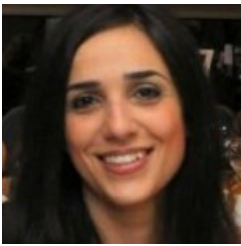
Publications: I have co-authored over 200 publications. My Hirsch Index is 42 (date March 15, 2015) and my RG score on Research Gate is above 39. If wanted I can provide an overview of these publications.

My view on AAATE: I have always been an active supporter of AAATE. One of the founding organisations of AAATE was iRv, where I was a member of the management team in that period. Also after I left iRv I have always supported the organisation by facilitating Gert Jan Gelderblom, one of my senior team members, to be active in the board.

I think technology is of crucial importance for people with disabilities or a chronic disease to live an active and independent life. The potential of technology is enormous, but it takes specialised expertise to fully exploit this potential. One of my greatest concerns in the past 8-10 years is that many people, especially policy makers and people in health insurance companies, seem to think that it is all easy and that mainstream technologies will be sufficient. The need for specialist expertise in the field of what I like to call 'technology for human functioning' is widely ignored. One of the main challenges for AAATE is to continue putting this need on as many agenda's as possible, in policy (European, national and worldwide), and to combine forces with other related organisation in doing so. I would like to explore the possibilities of organising the AAATE conference in connection to other related European conferences, to explore the possibilities of expanding the membership (also with institutional members), and the possibilities of developing a more explicit thematic 'agenda' for research and development related to AT in Europe (and abroad), maybe with a relating professorship at a relevant university in Europe as a tool for that.

Nomination for President

Katerina Mavrou



Katerina Mavrou is an Assistant Professor, in Inclusive Education and Assistive Technology, at the European University Cyprus. She holds a PhD in Technology and Disability (Inclusive Education) (University of Birmingham, UK), a MEd in Inclusive Education (University of Manchester, UK), a BEd in Educational Sciences (Primary Education) (University of Cyprus) and an Assistive Technology Specialist Certificate (University of California, at Northridge, USA). She worked as a primary education and as a special education teacher in primary public schools in Cyprus. She has also served as a Special Needs Coordinator and as an Assistive Technology Coordinator at the

Ministry of Education Cyprus. During 2006-2010 was a Scientific Collaborator of the European University Cyprus, and since 2011 she holds an academic position in the rank of Assistant Professor, in Inclusive Education and Assistive Technology, at the Department of Education Science (EUC), in which she is also the coordinator of the MA in Special and Inclusive Education programme. Her research interests include (assistive) technology and inclusive education in all aspects of user-centred evaluation, implementation and professionals' collaboration, issues of policy and education for inclusion and ICT-AT, accessibility and universal design (for learning). She is particularly interested in the area of the use of high-tech digital tools in learning, accessibility, evaluation and development. She is involved in research labs at the European University of Cyprus (eg OT and AT Labs, ICTEE Lab & Mobile Technology Lab) as well as in other synergies (eg UCY Psifides Gnosis) relevant to her areas of interest. She is also involve in software development and localization of inclusive education and disability. Her research record includes European commission reports, referred journal publications, book chapters in edited volumes, an edited book volume and presentations in international conferences. She has been involved in local and international collaborative projects (eg ANED national expert [disability-europe.net], ENTELIS [www.entelis.net], EASTIN [www.eastin.eu], ESIPP [www.esipp.eu], BONDS, The Living Book - Augmenting Reading For Life [http://www.thelivingbook.eu/]), and professional and academic Associations such as the Association for the Advancement of Assistive Technology in Europe and ISAAC, and has been a AAATE board member since 2016. She is also a member of the Chief Editorial Committee of the Journal Technology and Disability, and an editorial board member of the Journal of Enabling (Assistive) Technologies and the Journal of Intervention in School and Clinic.

Contact: K.Mavrou@euc.ac.cy

Selected publications and other info at: <https://sites.google.com/site/mavrouk/>

EUC profile at: http://www.euc.ac.cy/easyconsole.cfm/id/182/lang/en/c_id/399/dep/164

Nomination for President Elect

Dr. Georgios Kouroupetroglou



Dr. **Georgios Kouroupetroglou** is Director of the "Speech and Accessibility Laboratory" (<http://speech.di.uoa.gr>) and Director of Postgraduate (MSc & PhD) Studies at the Department of Informatics & Telecommunications, as well as founder and Head of the "Accessibility Unit for Students with Disabilities" (<http://access.uoa.gr>), National and Kapodistrian University of Athens, Greece. His current research interests focuses on the area of Computer Accessibility and Voice User Interfaces, as a part of the major domain of Human-Computer Interaction. Professor Kouroupetroglou has actively participated in more than 58 research projects funded by the European Union or the Greek Ministry of Research. He has been reviewer/evaluator and member of working groups/technical panels of various European Union's projects/ programs. He is author of more than 160 scientific papers (<http://speech.di.uoa.gr/sppages/publications.html>) in journals / conference proceedings and numerous books and technical reports in the fields of his

interest. He teaches the following courses: "Speech and Natural Language Processing", "Real Time Digital Signal Processing Systems", "Speech-based Human Computer Interaction-Voice Technologies", "Computer and Web Accessibility", "Computer Systems for Students with Disabilities", "Computer-based Rehabilitation for persons with Disabilities" and "Advanced Computer-based Assistive Technologies for the Disabled". His is: member of the Editorial Board of the International Journal Universal Access in the Information Society, published by Springer and the Journal Technology and Disability, published by IOS Press as well as founder & vice president of the Hellenic Association of Assistive Technologies (HAAT) and founder & vice president of the Association for Visual Impairment Research (AVIR). He served as co-chairman of the IEEE Symposium on Computational Intelligence in Robotic Rehabilitation and Assistive Technologies (2014-2019), as General Chairman of the 16th ICCHP (International Conference on Computers Helping People with Special Needs), Linz, Austria, 2018 and General Chairman of the International Conference on Enabling Access for Persons with Visual Impairment (ICEAPVI), 2015, Athens, Greece

Nomination for Board Positions

Pr Dominique Archambault



Professor in Computer Sciences at Université Paris 8-Vincennes-Saint-Denis, Dominique Archambault is **leading** the team THIM (**Technologies, Disabilities, Interactions, Multimodalities**), part of CHArt laboratory (EA 4004, Human and Artificial Cognition), where he is conducting researches on non-visual human-computer interaction and accessibility to complex documents. The domains of application of his research works are multimodal access to mathematical expressions, allowing collaborative works between sighted and non-sighted persons and accessibility to multimedia games. He has been the **director** of the **Master**

MIASHS "HANDI" (Mathematics and Computer Sciences Applied to Human and Social Sciences) since 2015, and of the speciality "**Technologies and Disabilities**" (<http://master-handi.fr>), where he teaches especially Computer Programming, Assistive Technologies and Software Accessibility. He is also the **director** of the teaching department ICH (Ingénierie-Cognition-Handicap) at Paris 8, which includes this Master and a Licence MIASHS

Pr Archambault got his PHD in Computer Sciences in 1995, and became Associate Professor the same year, in University of Le Havre. He started to work on Assistive Technologies in 1997 and joined the INOVA (Non Visual Interfaces and Accessibility) team at Université Pierre et Marie Curie-Paris 6. He participated in several projects funded on the IST Programme and served as project coordinator of two of them. He also served the European Commission **as expert** for the selection and the evaluation of EU-funded projects. After defending his "Habilitation à Diriger les Recherches" (necessary in France to become a PHD supervisor and to apply to a full professor position) at the end of 2010, he got a **full professor** position in Université Paris 8-Vincennes-Saint-Denis in 2011 and joined the THIM lab, and the Master "Technology and Handicap", where he was already teaching since 2001. He is teaching especially Programming, Human Computer Interaction, Non visual interfaces and accessibility, and Accessible programming of mobile devices. From 2011 to 2019 Pr Archambault has been the **General secretary** of IFRATH (<http://ifrath.fr>), an Institute which regroups French research teams working on Assistive Technologies.

Pr Archambault has been **working with students with disabilities** in Universities since 1988, at different levels. From 2012 to 2016, he was designed by the President of University Paris 8 as Chargé de Mission Handicap (Policy Manager), with the role of defining the policies of the University in terms of Handicap (especially about providing support and help to students with disabilities at the university, but also staff) and the charge of piloting the support center for students with disabilities. During year 2012, he contributed with several colleagues to the creation of APACHES (<http://asso-apaches.fr>), a national level association, from which he has been the vice-president, regrouping staff involved in the support of students with disabilities from all French Universities. He has given several talks in national and international events on this topics. He participates in several working groups from the French ministry of higher education, including the organisation of **vocational training for staff of support centres** for students with disabilities. Since 2015 he has been giving several conferences and erasmus lectures in different universities in Siberia, about digital and pedagogical accessibility, and inclusion of students with disabilities at universities. He was elected at the board of AAATE (Association for the Advancement of Assistive Technologies in Europe – <http://aaate.net>) in 2013 and he is **Associate Editor** of the Scientific Journal "Technology and Disability" since September 2015. Pr Archambault has about a hundred publications including papers in international journals and conferences (<http://www.mendeley.com/profiles/dominique-archambault>).

Nomination for Board Positions

Pedro Encarnação



Pedro Encarnação holds a PhD degree in Electrical and Computer Engineering from the University of Lisbon, Portugal. He's an Assistant Professor (Affiliate) of the Católica Lisbon School of Business & Economics, where he teaches Math. He served as Associate Dean of the Faculty of Engineering of Universidade Católica Portuguesa from 2002 to 2008. He started his research career in the area of non-linear control of autonomous vehicles, namely autonomous underwater vehicles and unmanned air vehicles, with contributions in the area of path following. In the last ten years, after a sabbatical spent at the Faculty of Rehabilitation Medicine of the University of Alberta and at the Glenrose Rehabilitation Hospital, in Edmonton, Alberta, Canada, he moved his research focus to rehabilitation engineering, in particular to the use of robots as augmentative manipulation tools to enable children with disabilities to participate in play, academic activities, and also to reveal their cognitive skills. He was the principal investigator of two Portuguese-funded projects in this area, as well as co-chair of LUDI, a COST Action involving more than 100 scholars and practitioners from 32 European countries dedicated to the theme of Play for Children with Disabilities. Besides several journal and conference papers and book chapters, he has co-edited a number of books, in particular "Robotic Assistive Technologies: Principles and Practice" for CRC Press, "Guidelines for Supporting Children with Disabilities' Play. Methodologies, tools, and contexts" for De Gruyter, and recently he joined Albert Cook and Jan Polgar for the 5th edition of the book "Assistive Technologies: Principles and Practice". Pedro is a member of AAATE since 2009, he co-organized the AAATE 2013 conference in Vilamoura, Portugal, and he's currently the National Contact Person for AAATE in Portugal.

Nomination for Board Positions

Ramon Daniels



I started of my career in the Netherlands in 1988 as an occupational therapist in rehabilitation, responsible for coaching colleagues in advising assistive technology, and then became a teacher in occupational therapy (in 1995) in Amsterdam. I finished the European Master of Science in Occupational Therapy in 2001 and was for many years (1998-2004) involved in the European Network of Occupational Therapy in Higher Education (ENOTHE) as a project leader. Since 2004 I work for Zuyd University in Heerlen (The Netherlands) holding different positons; manager/teacher at the department of occupational therapy, researcher, developer and coordinator of

the master program Innovation in Complex Care. In 2011 I finished my PhD (Disability Prevention in Frail Elderly) followed by project leadership for several grant supported projects regarding elderly care, person-centered care, interdisciplinary cooperation, self-management, sustainable housing, community care and technology. Since January 2017 I am appointed as professor at the Research Centre of Assistive Technology in Care at Zuyd University; the Research Centre has a long and outstanding tradition in research and training in Assistive Technology. Besides, I am working for the Living Lab in Ageing and Long-Term Care of Maastricht University and Sevagram (elderly care institute) with focus on Assistive Technology and Innovation Management. Since 2018 I am part of the AAATE board, responsible for External Communication and Information.

Nomination for Board Positions

Anne Kanto-Ronkanen



Anne Kanto-Ronkanen, Occupational Therapist, MSc.

I am working at Ministry of Social Affairs and Health, Wellbeing and Services as Senior Specialist in rehabilitation and assistive technology in Finland. I have been working at Kuopio University hospital as occupational therapist and later rehabilitation coordinator. I have been almost ten years senior lecture at Savonia University of Applied Sciences. I have led several AT services projects and been member or chairperson in national experts groups in AT e.g. developing digital services in AT field.

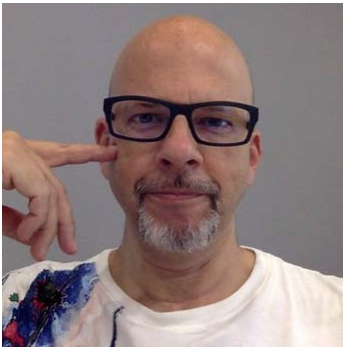
I have written articles on national and international papers and I have being part of writer's team, which has written books about rehabilitation and assistive technology. Books are in Finnish.

I have been on AAATE board since 2013, past six years a secretary. My motivation to be a candidate is mainly, because my new job. I see many new possibilities to do the networking and developing AT services, which benefits work in AAATE board.

For more information, please contact:
anne.kanto-ronkanen@stm.fi
tel. + 358 50 4720653

Nomination for Board Positions

Silvio Marcello Pagliara



Electronic and Biomedical Engineer, PhD in Inclusive Education,
Former Adjunct Assistant Professor at the College of Science and Technology, Temple University,
Philadelphia, PA, USA.

He's projects coordinator and board member in GLIC – The Italian Network of AT Centres.

He's the founder, president of the board and senior researcher of the Resource Center for Assistive Technology, Ausilioteca Mediterranea Onlus, a not-for-profit SME, based in Naples and Bari, working in Campania and Puglia Regions, South Italy.

His work is focused on technology assessment in terms of accessibility, independent life and universal design. Strong knowledge on home and building automation, automatic speech recognition and HCI. Continues to carry out research and study of innovative technology solutions at affordable cost and foster the autonomy and inclusion of persons with disabilities in their context with the use of technology. He is author of several publications on the use of ICT for the Inclusion in Italy and abroad. He is a consultant of various Public Entities and Institutions, national and international entities and companies operating in the field of the use of ICT for the quality of life. Keynote and invited speaker in several universities in Italy and abroad.

Email: silvio.pagliara@centroausili.org - (private) silvio.pagliara@gmail.com

Senior Researcher Ausilioteca Mediterranea Onlus – Resource Centre for Assistive Technology not for profit, [link](#)

Secretary General- Board Member GLIC – Italian network of resource centre for assistive technology Association, [link](#)

General Assembly 2019 Proxy Form

I, the undersigned

Last name

First name

appoint the following AAATE member:

Last name

First name

to represent me during the AAATE 2019 Annual General Assembly and to vote on my behalf for any issue where voting is required.

Signature of delegate

Place and date

Acceptance signature of proxy

Place and date

Notice:

- This form, duly filled in, and signed by both the Member delegating and the Member accepting to act as proxy, should be handed to the Board at the beginning of the Assembly.
- Maximum 5 proxies per participating member will be accepted.
- The person(s) delegating as well as the person acting as proxy should be AAATE Members in good standing, i.e. having paid all due annual membership fees, including the running year.